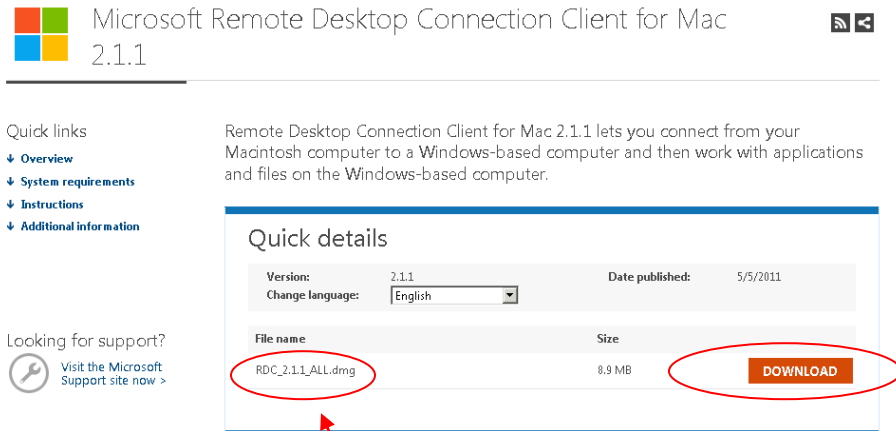


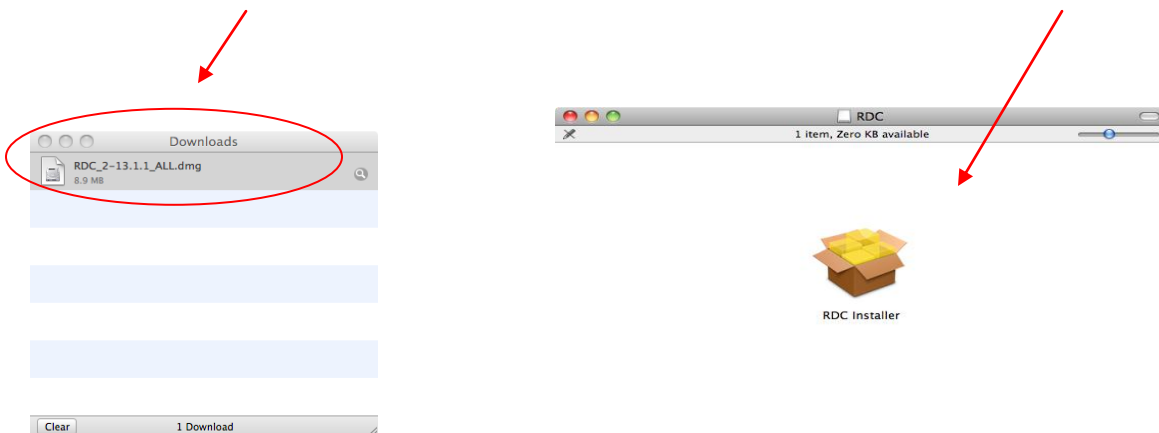
Go to <http://www.microsoft.com/en-us/download/details.aspx?id=18140>



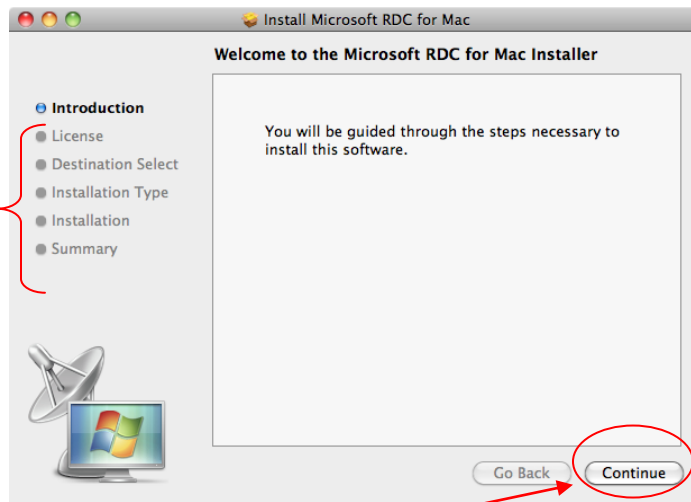
- Check file name is RDC_2.1.1_ALL.dmg, and Click on **Download**.

Once the download is completed;

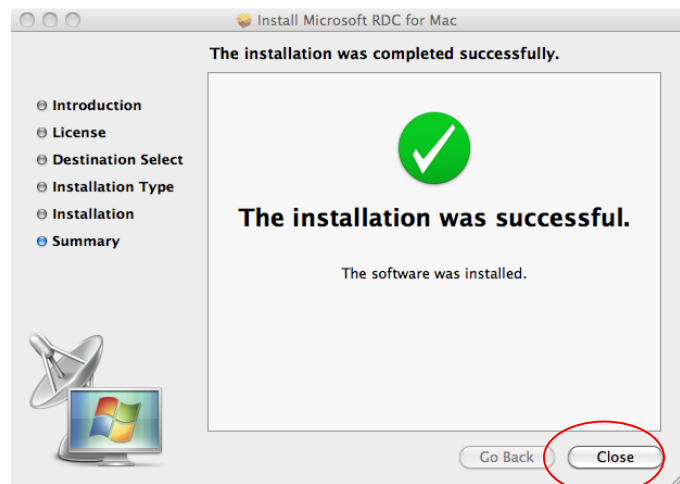
Select the RDC_2-13.1.1_ALL.dmg file from you Downloads folder, (in some cases the download will directly bring you to your RDC Installer folder), select this icon



The installation guide for the RDC will appear



Select continue through the Introduction and Licenses, agree to the License box, click install at Destination Select/Installation Type. A box requesting your system password may pop up – if so, enter you systems password and continue.



Close the Installation box.

There will now be two new Icons: RDC on your desktop: and an icon of a Satellite dish (Remote Access Icon) on your tool bar,



Click on the Remote Access Icon, this will bring up a window to connect to MaximOnline and will be your connection to MaximOnline for future use.

Connecting to MaximOnline

Once you have selected the Remote Access Icon a new window will appear requesting MaximOnline's connection address: Enter **go.maximonline.co.nz:10000**



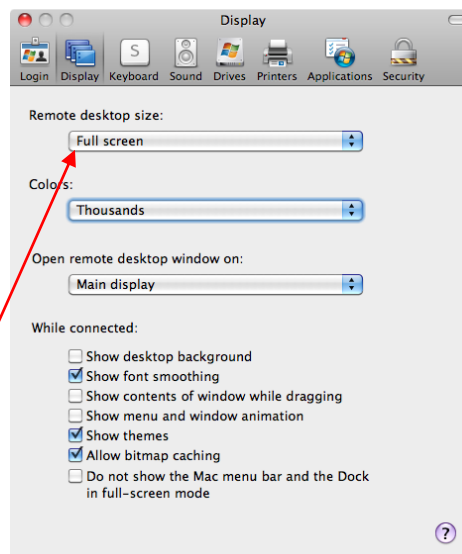
Before connecting we have to set up your preferences, go to the file tool bar at the top of your screen, select **RDC** (next to the apple icon), a drop down box will appear, select preferences.

Login Preferences



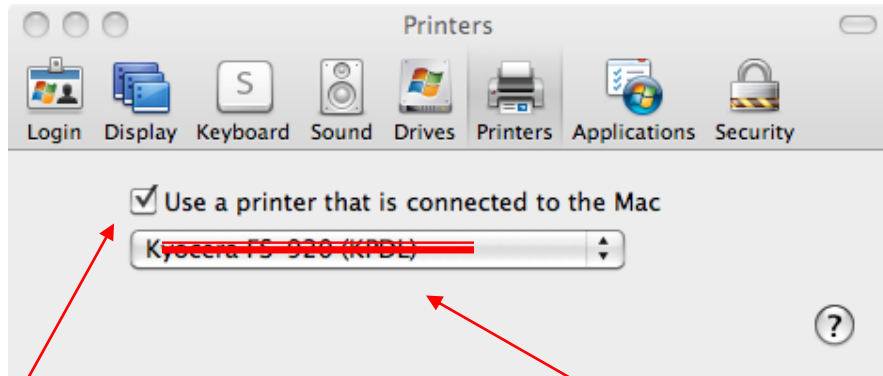
Enter your **user name** and password, and tick add to Keychain and tick reconnect automatically if disconnected.

Display Tab



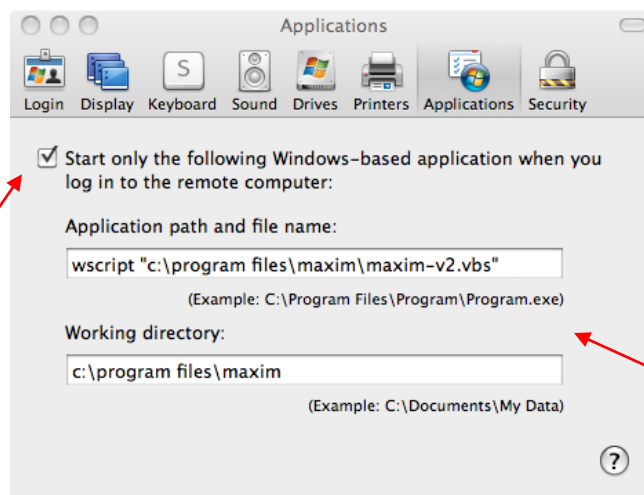
Change your remote desktop size to Full Screen (this can be changed anytime to suit your individual Workstation)

Printers



Select Use a printer that is connected to the Mac, and **choose your printer's name**

Applications



Tick Start only the following Windows-based application....

Program Path and file name as:
wscript "c:\program files\maxim\maxim-v2.vbs"

Start in the following folder:
c:\program files\maxim

When entering
program paths and
folder names make
sure you include the
spaces and speech
marks!

Security



Select Warn me if authentication fails.

Close the applications box once all your preferences have been entered.



Now you can press **Connect**.



Your screen will bring you into the blue MaximOnline window, enter your username (intials) and press OK.

This will bring you to the MaximOnline Main Menu,

Congratulations you are now connected to MaximOnline!